



507 1/2 CAMINO SIN NOMBRE



2 Bedroom • 2 Bath • 1,755 SF • \$650,000 • MLS# 202100048



LIVING & DINING

↻ High Ceiling Foyer ↻ Flagstone Floors ↻ Kiva Fireplace



507 1/2 CAMINO SIN NOMBRE

2 Bedroom • 2 Bath • 1,755 SF • \$650,000 • MLS# 202100048

Unique opportunity to own this part adobe, nearly 1,750 sq ft home on the Historic East Side. Enter through the enclosed flagstone and gravel patio with custom landscaping and drip irrigation. The welcoming foyer with heated floors and high ceilings lead to the Saltillo-tiled, recently renovated galley kitchen and dining nook, complete with kiva fireplace. Light-filled living area with sitting room, den and office spaces, flagstone floors, built in stone planter and split-use bath with laundry. Exposed vigas and many nichos throughout.

Spacious green-label carpeted master and guest bedrooms. Mini-split heating and A/C units. Many features including custom front door and built-ins. Flagstone parking area. Centrally located close to restaurants, art galleries and shops of Canyon Road.

DARLENE STREIT | 505.920.8001 | DSTREIT@DSTREIT.COM



B E D R O O M S

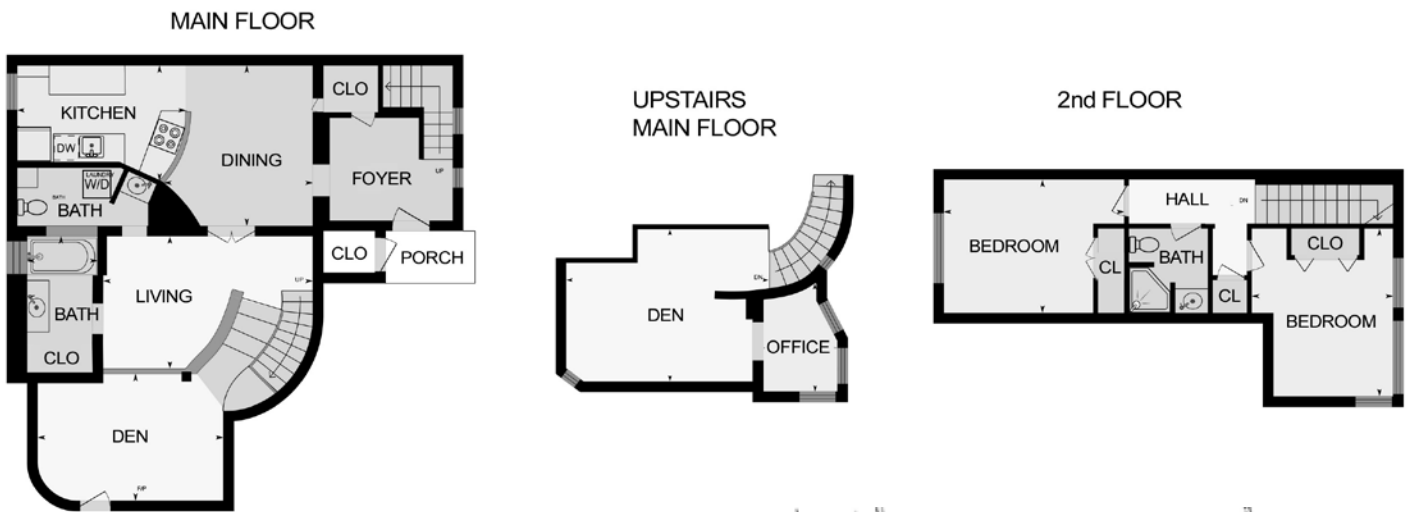
↔ Spacious Master Bedroom ↔ A/C Units



DETAILS

- 2 Bedrooms
- Baths: 1 Full, 1 Three Quarter
- 1755 SF
- 0.088 Acre
- Wood, Brick, Flagstone, Carpet Floors
- Adobe and possibly other materials, Frame, Stucco Construction *
- Flat, Tar & Gravel Roof
- 2 Off Street Parking Spaces
- 1 Fireplace
- Gas Cooking
- Heating: Electric, Gas, Gas Stove, Ductless (MiniSplit), Radiant, Radiant In-Floor
- Cooling: Ductless A/C
- City Sewer
- City Water
- Internet: Cable, DSL
- Insulated Windows
- Landscaped
- Security System
- Drip/Sprinkler System
- Tankless Hot Water

*Buyer to Verify



Above floor plan provided by iGuide and may not be entirely accurate.

Plat depiction is for illustration purposes and may not be entirely accurate.



DARLENE STREIT

SANTA FE REAL ESTATE PROPERTY



DARLENE STREIT
505.920.8001 • dstreit@dstreit.com
 Office: 417 E. Palace Avenue
 Santa Fe NM 87501

SantaFeRealEstateProperty.com
DarleneStreit.com
SantaFeLuxuryHomesandLand.com



View
Listing
Online

© Sotheby's International Realty, Inc. All rights reserved. Sotheby's International Realty® is a registered trademark. This material is based upon information which we consider reliable but because it has been supplied by third parties, we cannot represent that it is accurate or complete and it should not be relied upon as such. This offering is subject to errors, omissions, changes including price or withdrawal without notice. If your property is listed with a real estate broker, please disregard. It is not our intention to solicit the offerings of other real estate brokers. We are happy to work with them and cooperate fully. Operated by Sotheby's International Realty, Inc. Real estate agents affiliated with Sotheby's International Realty, Inc. are independent contractor sales associates and are not employees of Sotheby's International Realty, Inc. Equal Housing Opportunity. Sotheby's International Realty, 326 Grant Ave, Santa Fe, NM 87501, 505-988-2533.

Sotheby's
INTERNATIONAL REALTY