



# 30 OLD PECOS LANE



3 Bedroom • 3 Bath • 3037 SF • \$825,000 • MLS# 202004694





## LIVING & DINING

⇒ Diamond Plaster Finish ⇒ Dramatic Great Room ⇒ Chef's Kitchen





# 30 OLD PECOS LANE

3 Bedroom • 3 Bath • 3037 SF • \$825,000 • MLS# 202004694

Wonderful 3-bedroom 3 bath Pueblo-style custom home with both Jemez and Sangre mountain views is sited on over 2.6 acres. High end finishes echo the iconic Santa Fe style: vigas, corbels, diamond finish plaster, high ceilings, carved doors throughout and oak floors. Entertain in style in the dramatic great room with an open living/dining/kitchen concept design. The large curved living area has 6 windows with landscaped views and an intimate corner kiva. The Italian-tiled chef's kitchen has light wood cabinets, stainless appliances, an island with double sink and seating, and there's a wet bar in the dining room. A built-in desk and bookcases flank two walls of the separate office/studio. Split bedroom wings for maximum privacy for guests. The spacious master suite has a sitting area, windows and doors to the back portal and a grand master bath with a soaking tub, a steam shower, dual vanities and sinks, and a richly coffered ceiling. Guest bedroom opens to its own private patio. The large back portal is brick lined and features an outdoor kiva. Finished 2-car garage, recirculating hot water system, lush landscaping with well-established gardens and drip irrigation. Enjoy the peacefulness of rural living just minutes from the Santa Fe Plaza, a medical center and Museum Hill, with easy access to I-25.

DARLENE STREIT | 505.920.8001 | DSTREIT@DSTREIT.COM



## B E D R O O M S

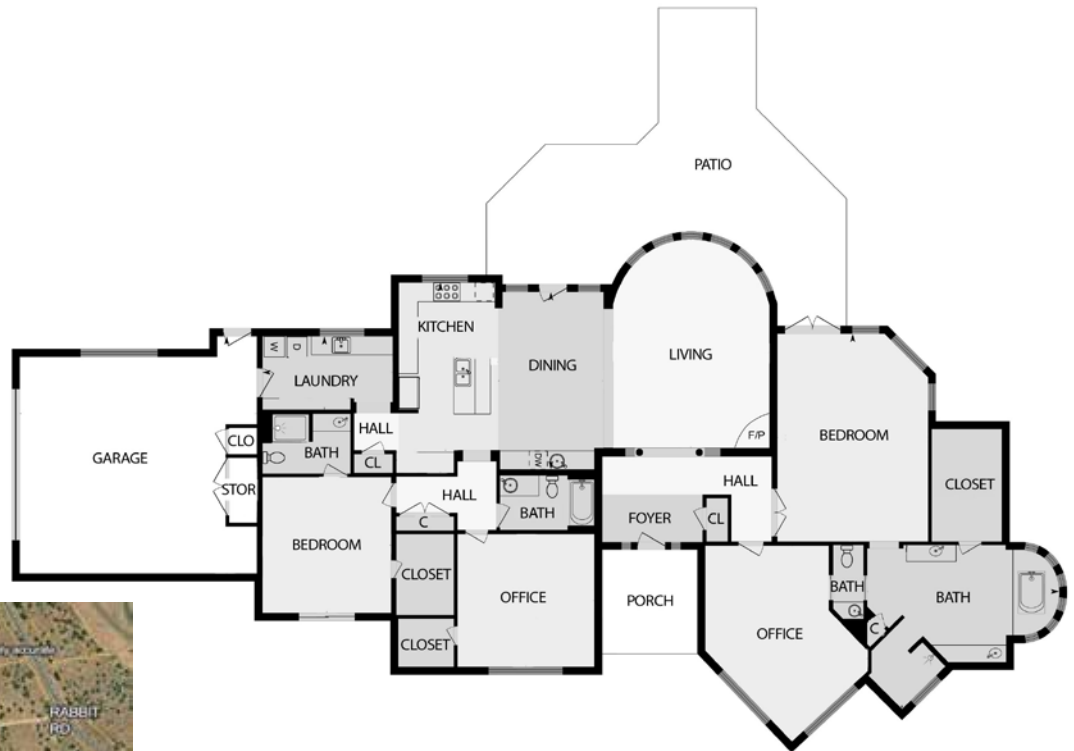
↻ Master Suite ↻ Soaking Tub ↻ Steam Shower



# DETAILS

- 3 Bedrooms
- Baths: 2 Full, 1 Three Quarter
- 3037 SF
- 2.67 Acres
- Built in 2000
- Wood, Tile, Carpet Floors
- Adobe and possibly other materials Construction \*
- Flat, Modified Bitumen Roof
- 2 Garage Spaces
- 2 Fireplaces
- Electric, Gas Cooking
- Propane, Radiant In Floor Heating
- Evaporative Cooling
- Septic
- Shared Well
- Internet: DSL, Satellite Dish, Wireless
- Insulated Windows
- Landscaped
- Drip/Sprinkler System

\*Buyer to Verify



*Above measurements provided by iGuide and may not be entirely accurate.*

*Plat depiction is for illustration purposes and may not be entirely accurate.*

**DARLENE STREIT**

SANTA FE REAL ESTATE PROPERTY



**DARLENE STREIT**

505.920.8001 ▪ dstreit@dstreit.com

Office: 417 E. Palace Avenue

Santa Fe NM 87501

SantaFeRealEstateProperty.com

DarleneStreit.com

SantaFeLuxuryHomesandLand.com



View  
Listing  
Online

© Sotheby's International Realty, Inc. All rights reserved. Sotheby's International Realty® is a registered trademark. This material is based upon information which we consider reliable but because it has been supplied by third parties, we cannot represent that it is accurate or complete and it should not be relied upon as such. This offering is subject to errors, omissions, changes including price or withdrawal without notice. If your property is listed with a real estate broker, please disregard. It is not our intention to solicit the offerings of other real estate brokers. We are happy to work with them and cooperate fully. Operated by Sotheby's International Realty, Inc. Real estate agents affiliated with Sotheby's International Realty, Inc. are independent contractor sales associates and are not employees of Sotheby's International Realty, Inc. Equal Housing Opportunity. Sotheby's International Realty, 326 Grant Ave, Santa Fe, NM 87501, 505-988-2533.

**Sotheby's**  
INTERNATIONAL REALTY