



282 CALLE JUANITA



2 Bedroom • 2.5 Bath • 2,556 SF • \$2,000,000 • MLS# 202003645



LIVING & DINING

↻ Light-Filled ↻ Open Floor Plan ↻ Clerestory Windows



282 CALLE JUANITA

2 Bedroom • 2 1/2 Bath • 2,556 SF • \$2,000,000 • MLS# 202003645

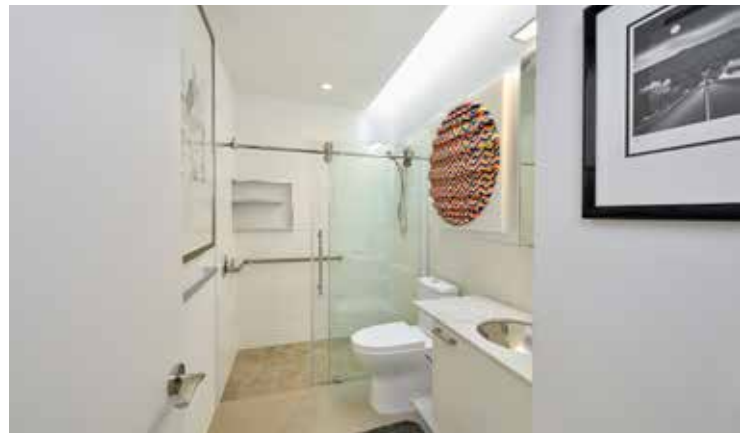
2 bedroom 2.5 bath Santa Fe contemporary home plus casita in the Historic East Side. With clean, crisp lines, a strong emphasis on geometric shapes, and a simple color palette, this light-filled residence is ideal for art collectors and devotees. Open floor plan design allows for a welcoming feeling, especially when entertaining guests. Urbane architectural features include clerestory windows, moveable floating walls, concrete floors, and a sleek, stylish fireplace. Chef's kitchen is appointed with Wolf appliances including induction cooktop, convection steam and standard convection ovens, Wolf microwave, Sub-Zero refrigerator, island, and access to a spacious pantry and laundry room with lots of extra storage. Master suite has a super large dual closet with built-ins. The casita offers private, flexible space for guests or to be used as a studio or office. Eco-friendly landscaped courtyard provides outdoor space for relaxing and dining al fresco. 2-car attached garage. Incredible opportunity to own a recently built home (2017) so close to the Santa Fe River, Monsignor Patrick Smith Park, and the galleries and restaurants of Canyon Road.

DARLENE STREIT | 505.920.8001 | DSTREIT@DSTREIT.COM



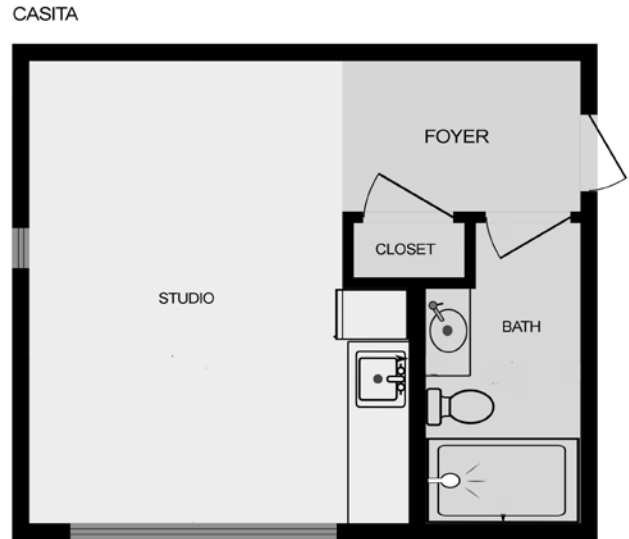
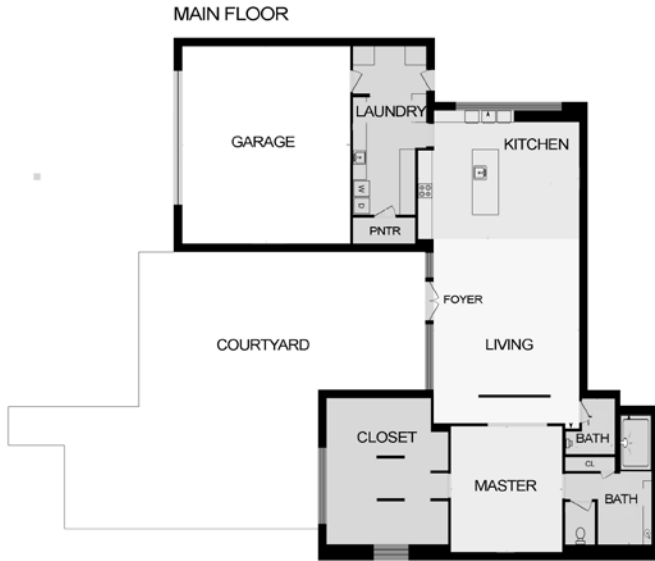
B E D R O O M S

↔ Master Suite ↔ Casita/Studio/Office ↔ Perfect for Art Collectors



DETAILS

- 2 Bedrooms
- Baths: 2 Three Quarter, 1 Half
- Main House 2209 SF
- Casita 378 SF
- .305 Acres
- Built in 2017
- Frame, Stucco Construction *
- Flat, Membrane Roof
- 2 Garage Spaces
- 1 Fireplace
- Induction Cooking
- Hot Water, Radiant In Floor Heating
- Refrigerator, Central Cooling
- City Sewer
- City Water
- Internet: Cable
- Insulated Windows
- Security System
- *Buyer to Verify



Above measurements provided by iGuide and may not be entirely accurate.

Plat depiction is for illustration purposes and may not be entirely accurate.

DARLENE STREIT

SANTA FE REAL ESTATE PROPERTY



DARLENE STREIT
505.920.8001 • dstreit@dstreit.com
 Office: 417 E. Palace Avenue
 Santa Fe NM 87501

SantaFeRealEstateProperty.com
DarleneStreit.com
SantaFeLuxuryHomesandLand.com



View
Listing
Online

© Sotheby's International Realty, Inc. All rights reserved. Sotheby's International Realty® is a registered trademark. This material is based upon information which we consider reliable but because it has been supplied by third parties, we cannot represent that it is accurate or complete and it should not be relied upon as such. This offering is subject to errors, omissions, changes including price or withdrawal without notice. If your property is listed with a real estate broker, please disregard. It is not our intention to solicit the offerings of other real estate brokers. We are happy to work with them and cooperate fully. Operated by Sotheby's International Realty, Inc. Real estate agents affiliated with Sotheby's International Realty, Inc. are independent contractor sales associates and are not employees of Sotheby's International Realty, Inc. Equal Housing Opportunity. Sotheby's International Realty, 326 Grant Ave, Santa Fe, NM 87501, 505-988-2533.

Sotheby's
INTERNATIONAL REALTY