

6 Puma Circle

4 Bedroom / 6 Bath / 5876 SF • \$1,295,000 • MLS# 201903342

DARLENE STREIT

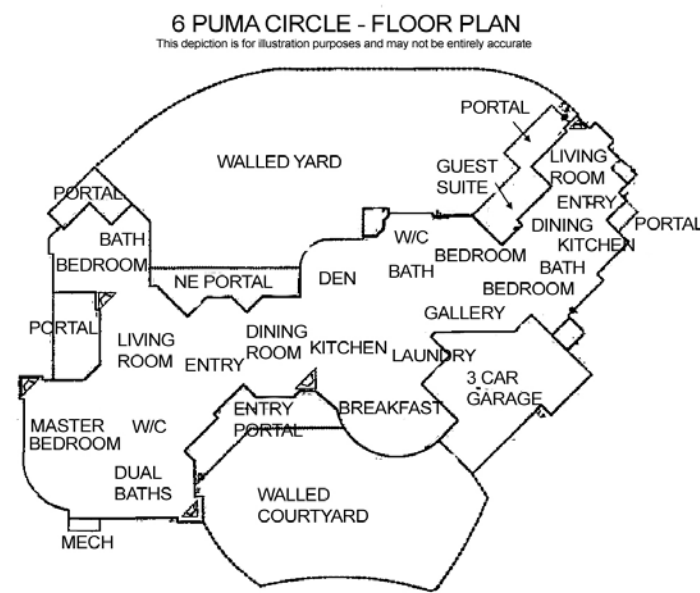
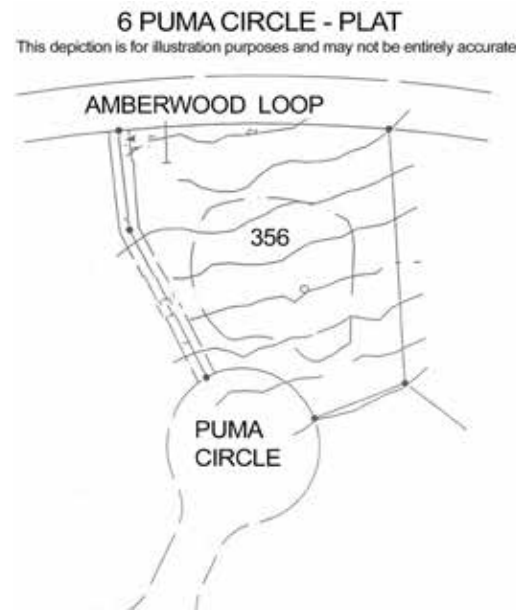
SANTA FE REAL ESTATE PROPERTY

505.920.8001 • dstreit@dstreit.com

417 E. Palace Avenue • Santa Fe NM 87501

6 Puma Circle

4 Bedroom / 6 Bath / 5876 SF
\$1,295,000 • MLS# 201903342



Bright, open living spaces abound in this elegantly-appointed 4 bedroom, 6 bathroom single level home in the gated Las Campanas community. Enter the courtyard through the designer patina gate. Inside the home, the entryway with high ceilings and clerestory windows is bathed in natural light as bay windows offer mountain views. Subtle tones and rich textures add to the sophisticated yet comfortable setting. The open living room with kiva fireplace, beamed ceiling, wet bar and French doors leading to the patio and the landscaped yard make this home ideal for entertaining. The gourmet kitchen is well-equipped with top-end appliances including a recently reconditioned SubZero refrigerator and oven, and center island with Dacor gas range. Freshly

painted cabinets and granite countertops allow plenty of space for storage and prep work. The hearth room with a kiva fireplace, formal dining room and den provide spaces for gathering. The master suite with dual bathrooms and 2 walk-in closets is nicely separated from the other 2 bedrooms. The attached 1 bedroom 1 bath guest suite has its own kitchen/dining/living area and entrance with a portal offering privacy for guests. With so many upgrades including flagstone and travertine tile floors, interior painting and restained outdoor wood beams, corbels and garage door, this home has been thoughtfully renovated and enhanced to bring out the best in style and functionality. And it's just a short drive to Santa Fe Plaza dining and shopping.



DARLENE STREIT

SANTA FE REAL ESTATE PROPERTY

505.920.8001 • dstreit@dstreit.com

417 E. Palace Avenue • Santa Fe NM 87501



LISTINGS

Scan these QR Codes to view Darlene's listings online or to download our mobile app.

OR text DSTREIT to 87778, or go to: m.sir.com/dstreit



APP

To view additional photos of this property visit: SantaFeRealEstateProperty.com

Sotheby's International Realty and the Sotheby's International Realty logo are registered (or unregistered) service marks used with permission. Operated by Sotheby's International Realty, Inc. Real estate agents affiliated with Sotheby's International Realty, Inc. are independent contractor sales associates and are not employees of Sotheby's International Realty, Inc.

This material is based on information which we consider reliable, but because it has been supplied by third parties, we cannot represent that it is accurate or complete, and it should not be relied upon as such. This offering is subject to errors, omissions, change of price, or withdrawal without notice. EQUAL HOUSING OPPORTUNITY.

Sotheby's

INTERNATIONAL REALTY

326 Grant Ave, Santa Fe, NM 87501

505-988-2533





Elegantly Appointed Single Level Home in Las Campanas

- 4 Bedrooms
 - Baths: 2 Full, 2 Three Quarter, 2 Half
 - 5876 Sq. Ft.
 - 1.58 Acres
 - Built in 1995
 - Frame, Stucco Construction *
 - Flat Roof
 - 3 Garage Spaces
 - 11 Fireplaces
- Gas Cooking
 - Radiant In Floor Heating
 - Evaporative Cooling
 - Community Sewer
 - Community Water
 - Internet: Cable, DSL , Satellite
 - HOA Fees: \$671.50 per Quarter (2019)
 - HOA Fees Cover: Community Area &
- Road Maintenance, Security
 - Landscaped
 - Insulated Windows
 - Drip/Sprinkler System
 - Security System

**Buyer to Verify*

