

# DARLENE STREIT

SANTA FE REAL ESTATE PROPERTY

505.920.8001 • dstreit@dstreit.com

417 E. Palace Avenue • Santa Fe NM 87501

## 3 Goldpoppy Circle Lot 196

2.352 Acres

\$90,000 • MLS# 201701562



Excellent Las Campanas corner lot with sweeping mountain views. The 2.20 acre parcel is located in the gated community of Las Campanas, on a private cul de sac with 7 lots. The lot is wooded, with junipers and pinons yet offers plenty of space to build your

dream home. The site is pre-approved for a home and guest casita. The location offers easy access to Santa Fe, plus magnificent views looking to the east, of the Sangre de Cristo mountains.

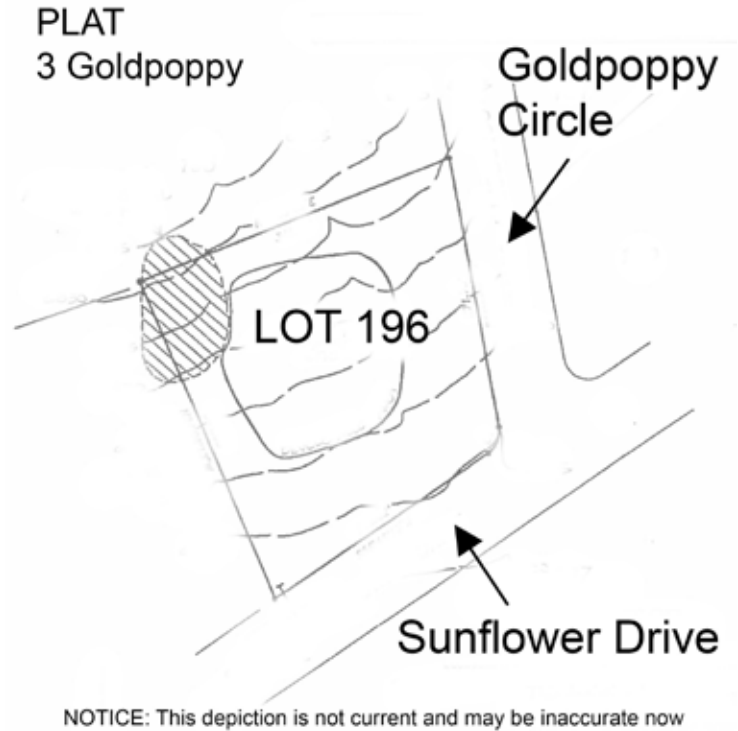


# 3 Goldpoppy Circle Lot 196

2.352 Acres ▪ \$90,000 ▪ MLS# 201701562

## Features

- 2.352 Acres
- Community Sewer
- County Water



**DARLENE STREIT**

SANTA FE REAL ESTATE PROPERTY

505.920.8001 ▪ [dstreit@dstreit.com](mailto:dstreit@dstreit.com)  
417 E. Palace Avenue ▪ Santa Fe NM 87501



LISTINGS

Scan these QR Codes to view Darlene's listings online or to download our mobile app.

OR text DSTREIT to 87778, or go to: [m.sir.com/dstreit](http://m.sir.com/dstreit)



APP

To view additional photos of this property visit: [SantaFeRealEstateProperty.com](http://SantaFeRealEstateProperty.com)

Sotheby's International Realty and the Sotheby's International Realty logo are registered (or unregistered) service marks used with permission. Operated by Sotheby's International Realty, Inc. Real estate agents affiliated with Sotheby's International Realty, Inc. are independent contractor sales associates and are not employees of Sotheby's International Realty, Inc.

This material is based on information which we consider reliable, but because it has been supplied by third parties, we cannot represent that it is accurate or complete, and it should not be relied upon as such. This offering is subject to errors, omissions, change of price, or withdrawal without notice. EQUAL HOUSING OPPORTUNITY.

**Sotheby's**

INTERNATIONAL REALTY

326 Grant Ave, Santa Fe, NM 87501  
505-988-2533